

Senior Housing for age 55+

St. Leo Apartments



Located at 171 Lake Avenue, in the village of Hilton, in Monroe County, St. Leo Senior Apartments features 40 apartments (including 25 supportive housing units for frail elderly). There will be 13 one-bedroom, and two (2) two-bedroom apartments with kitchen and spacious living-dining area. Four apartments are fully wheelchair accessible for those with mobility impairments, two units are fully adapted for hearing/visually impaired, and all apartments are handicapped visitable or adaptable.

St. Leo Senior Apartments is close to a pharmacy, restaurants, and shopping. An Episcopal SeniorLife Community Center is also on site with services available to residents and the community at large.

To apply or for more information visit us at
ProvidenceHousing.org/housing/St-Leo-Senior-Apts/

or contact us at:

Phone: 585.299.7001 | **TTY:** 1.800.662.1220

Fax: 585.529.9525 | **Email:** StLeoSeniorApts@dor.org

Office Hours: Monday, Wednesday & Friday 7:30am-4pm



Property managed by
Providence Housing Development Corporation
1150 Buffalo Rd, Rochester, NY 14624.

www.ProvidenceHousing.org



**Homes and
Community Renewal**

NYS Governor, Kathy Hochul
NYS HCR Commissioner, RuthAnne Visnauskas



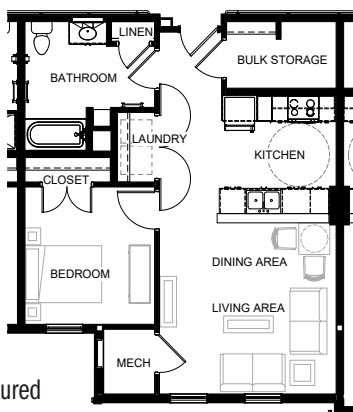
Apartment sizes:

One bedroom

730 sq. ft.


Two-bedroom:

954 sq. ft.



One bedroom is pictured

Amenities:

- Intercom entry system & elevator access
- Fully-equipped kitchen with Energy Star appliances
- Heat, hot water, & electric included with rent
- Individually controlled heat & electric
- Central air conditioning
- In-unit storage
- In-unit washer/dryer hookups available, plus self-pay laundry units available on each floor
- Wired for cable TV, Internet, & telephone
- High-speed WiFi available in common areas
- Community room, exercise room, & lounges on each floor
- Ample green space & gazebo
- Free off-street parking
- Smoke-free housing 
- Episcopal SeniorLife Community Center on site with services available to residents and community

Eligibility Guidelines:

- Income & occupancy requirements apply
- Must be 55+ years old

Rents:

One Bedroom (13 Units):

\$776/month (50% AMI)

Two Bedrooms (2 Units):

\$1,021/month (60% AMI)



Providence Housing is a not-for-profit corporation affiliated with the Roman Catholic Diocese of Rochester. Providence develops, finances and manages housing for individuals and families in the 12 counties of the Diocese of Rochester.